

Arrowbear Elementary Session 2017

Camp Information Packet



Session Dates: July 5th-8th

Dear Camp Family:

Welcome to Elementary Session at Arrowbear! We are delighted to have you join us this summer. This packet contains important information regarding camp; please read it thoroughly.

There is still space available for this session-spread the word!

Your arrival time will be emailed to you on June 21st and will fall between 1:00 and 3:15pm.

Please give us a call if you have any questions.

Looking forward to seeing you!

Happy Camping,
The Arrowbear Team



Packet Contents:

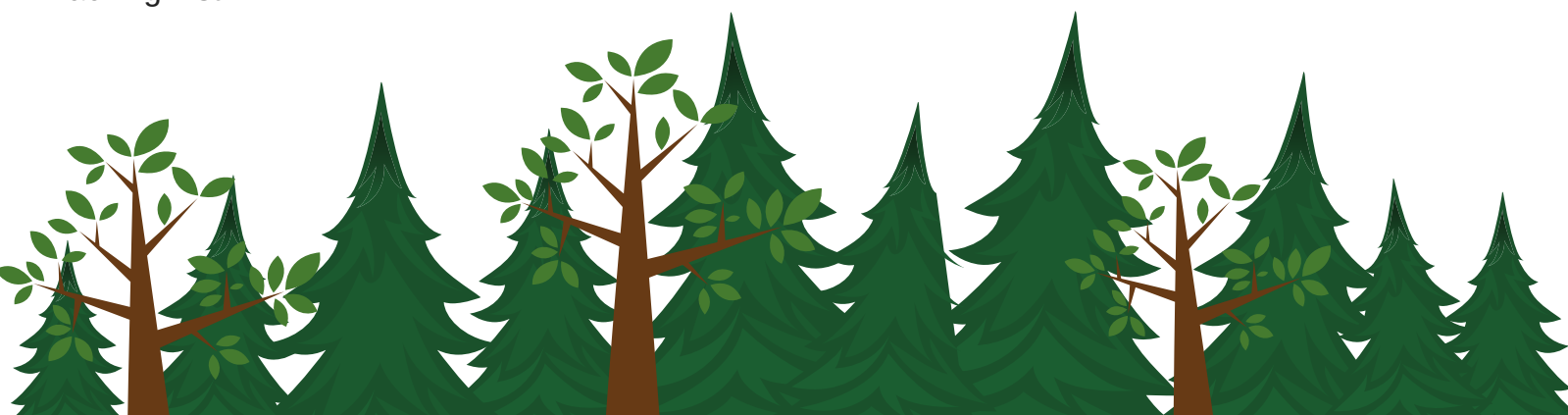
- Pre-camp Checklist
- Arrival and Departure information
- Directions to camp
- Tuition Balance and Scholarship Information
- Medication Information
- General Camp information covering:

- Auditions
- communication policies
- photos and group roster (the 'note')
- snack bar and camp store
- sleeping arrangements
- visiting policies

- Packing List

Information at a glance:

- Camp office phone: 909-867-2782
- Larke's cell phone: 562-225-7766
- June 28th: session balance and health form due
- July 5th: Arrival- check email June 21st for timing
- July 8th: Pick up day- 5pm concert
- Camp's mailing address: PO Box 180, Running Springs, CA 92382
- Camp's physical address 33500 Music Camp rd, Arrowbear Ik, CA 92382



Pre Camp Checklist



- Balance paid- due in full by June 28th
- Packing list double checked
- Online Health Form completed and up to date
- Attn: Campers who attended in 2016- please check that your health information is current and that your musical questionnaire is up to date
- Medications properly labeled and ready to turn in
- Prepare to say goodbye for 4 days (parents too) :)



Arrival and Departure Information

First Day of Camp-July 5th- check email June 21st for drop-off time

Due to limited parking, we assign arrival times based on enrollment date. If you arrive to camp early, please head back into town for a nice cup of joe or a yummy brunch at a local diner such as Blondie's Grille.

Last Day of Camp July 8th- Final Concert 5pm:

The Final Concert will be held at 5pm on campus. Guests may arrive anytime after 4pm to visit and load luggage. Feel free to bring a picnic dinner to enjoy during the concert. Please do not arrive early as our program will still be in session and the front gate will be closed.

Parking



Final concert parking will be stacked, filling every available area of camp starting with the areas farthest from the entrance. Camp staff will be available to direct- look for the folks in the orange vests. If you wish to be closer to the exit, please arrive closer to concert time. Thank you in advance for being patient with our parking system.

Please, for our legal compliance and safety, no dogs are allowed on campus, except for registered service dogs.

Carpool

If you are interested in carpooling, please let us know and we will email your name, contact info, and location to everyone on our Elementary roster 2 weeks before camp begins.

Driving Directions to Camp

Physical address: 33500 Music Camp Rd, Arrowbear Lk, CA 92382

From I-210 in Highland, take HWY 330 towards Big Bear. After winding up the mountain road, continue through the small towns of Running Springs and Arrowbear.

Turn right at the second Arrowbear Drive (on the corner you will see a chain link fence with many advertisement posters, as well as Blondie's Bar and Grille).

If you reach a sign for Green Valley or Snow Valley Ski Resort, you have gone too far.

Stay to the left of the small pond (it may be dried up by June) and continue up Music Camp Road until you reach the camp. We have a large, green, and brown "Arrowbear Music Camp" sign at the entrance to the camp.

Follow signs to the check-in station.



Tuition Balance and Scholarship Information:

Tuition Fees

Your remaining balance must be paid by June 28th.

Scholarships

If you paid in full for camp and then received a scholarship, your scholarship check will be handed to you during check-in. If a parent or guardian is not present to pick up the check we will mail it the following day.

If you received a scholarship from an organization other than Arrowbear Associates, please make sure camp has received all necessary paperwork.

Medications

All medications must be turned into the Camp Health Supervisor at check-in. This includes over the counter medications and is for legal compliance and camp safety. Medications **MUST** be in their original, labeled containers or they will not be administered. If you transfer pills into daily pill containers, make sure to provide the original prescription bottle.



General Camp information:

Auditions:

Each camper will meet with our music staff for an audition. This will help our teachers understand the needs of each camper. If you are currently working a solo and scales, please bring the music. Do not worry about the audition. Camp a is very supportive and noncompetitive environment. :)

Communication with campers:

Old fashioned snail mail

Campers love to receive mail while at camp!

Please mail to-

Camper's Name

c/o Arrowbear Music Camp

PO Box 180

Running Springs, CA 92382



Any mail that arrives after the session ends will be returned to sender.

Alternatively, family and friends are welcome to leave mail with the camp office to be placed in the camper's mailbox on a specific day.

One way emails through UltraCamp

Log into your ultracamp account and choose "additional Options" on the upper right hand side. Choose "Email a camper" from the drop down menu. Emails will be printed and placed in the campers' mailbox daily.

Messages

Messages received via email, text, or phone call will be placed in the campers' mail box daily.

Cell Phones:

Because the campers will be very busy playing music, making friends, enjoying the camp environment, we do limit phone use to a quick evening call home between 6:00 and 6:20.

For campers who bring a phone, it must be turned off and checked in during registration. For campers who do not bring a phone, we have a camp phone that may be used for calls.

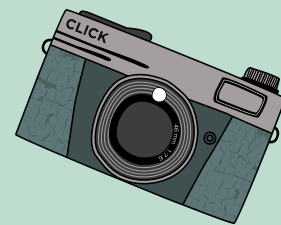
Phone policy:

Beginning Thursday July 6th-

- Campers may checkout their phone during our daily rest period time to listen to music.
- Designated photo taking opportunities (hikes, pool time, arts and crafts, trips to the park, etc.) will be organized daily with counselor supervision. You may also view camp photos in our ultracamp photo album.
- Phones may be used between 6:00 and 6:20pm for phone calls home.

Daily Camp Photos:

Beginning Wednesday night (July 5th) we will upload session photos to ultracamp. Check back daily at approximately 7pm for new uploads. Log into your ultracamp account and choose "Additional Options" on the upper right hand side. Choose "Photo Gallery" from the drop down menu.



Commemorative Photo and Camp Roster (the 'note')

At the end of the session we will provide all the campers with a group photo and roster including contact information for all campers and staff. If you wish to have your contact information left off the roster, please let us know.

Arrowbear Store:

During free time we sell a small assortment of snacks and camp gear. All money must be turned in to the camp for safekeeping. A debit system will be used for purchases and the remaining balance will be returned on the last day. We accept cash, check, money order made out to Arrowbear Music Camp, or credit card through ultracamp. For a 4 day Elementary session we recommend \$5-\$30.

To add money through credit card on ultracamp: Log into your account and click "additional options" Upper right hand side.

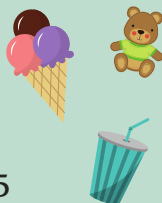
Prices-

Snacks/Soda \$1-\$4

T-shirts \$15

Sweatshirts \$25-\$30

Other camp gear \$3-\$25



The camp store will be open before and after the concert. At this time we will accept credit card payments.

Sleeping arrangements

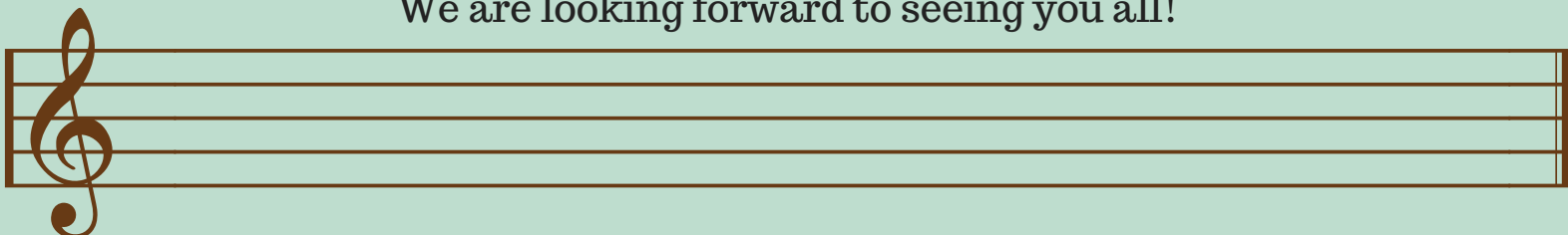
We cannot make sleeping arrangements in advance. There is plenty of space for friends to be near each other or hey make a new friend. You never know, a new bunkmate could be a new friend for life. Bunks are chosen on a first come first serve basis.

Visitors

We discourage visiting as it detracts from the camp experience. Visits are only permitted with prior permission from the camp office. The camp day to day activities may vary from the posted schedule.

Thank you

We are looking forward to seeing you all!

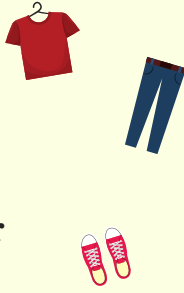




Packing List

Clothing

- Enough comfortable outdoor clothing for 4 days-
Example:
- Jeans/ long pant
- Short
- T-shirt/ tank top
- Sweat shirt/ sweater
- Pajamas
- Socks
- underwear
- Closed-toe shoes (hiking boots/ tennis shoes)
- Bag or collapsible hamper to hold dirty clothing
- Concert clothes: slacks, khakis or skirts; blouse, polo, or other collared shirt



Music related

- Instrument
- Pencils- soft lead
- Eraser
- Clothes pins to hold music
- Any items you may need for your instrument: mutes, reeds, extra strings



Misc.

- Reusable water Bottle (or purchase an aluminum camp water bottle here for \$12)
- Flashlight or headlamp



Toiletries

- Towel and washcloth for shower
- shower sandals (flip flops)
- Toothbrush, toothpaste, and floss
- Shampoo and soap
- Sunscreen and chapstick
- Bug repellent
- Any other personal items you may need



Bedding

- Warm Sleeping Bag- temps may drop below the 40's- please pack accordingly
- Pillow

Optional items

- Fitted sheet (to cover vinyl mattress)
- Blankets
- Swimsuit
- Pool towel
- Hat
- Sunglasses
- Hiking boots/ hiking gear
- Sandals
- Snack food in a labeled container
- Extra music for practice/ performance with accompaniment if needed
- Stamps and envelopes
- Camera
- Books/ magazines
- games
- drawing supplies
- headphones/ music player/iPod



Make sure to label all belongings with the camper's name. Aside from your instrument, please leave all valuables at home. Arrowbear Music Camp will not be held responsible for lost money or valuables.

